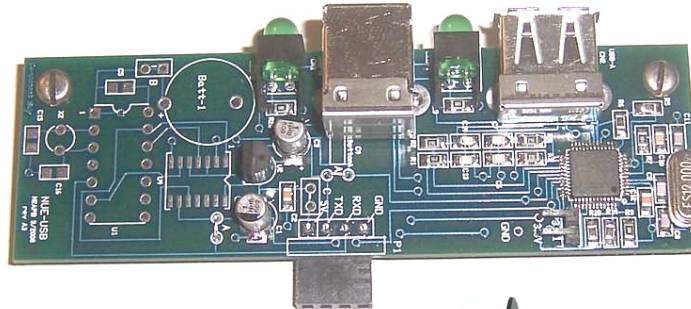


# Quick Installation Sheet

## NUE-PSK USB Add-On Card



The USB add-on card makes your NUE-PSK Digital Modem more useful with its ability to record QSO text (receive and transmit) to a USB flash memory stick for archival and remote printing. Use of the USB card requires v1.34f-or-later modem software containing new keyboard commands for controlling the card functions, plus an improved and consistent set of text editing commands. The USB card fits into the existing modem enclosure with minimal mods, and a replacement bottom chassis is optionally available with pre-drilled holes for the connectors.



### Installation

- 1) Attach 3-wire "extra signals" cable to modem pcb. On modem board, remove screws and lift up LCD. Solder cable wires to points 'a', 'c' and 'd' on the modem board at lower left area of U1. This cable will plug into P3 when USB board is plugged in. The wire from pad 'a' goes to P3 pin 2 (innermost on USB card). The wire from pad 'c' goes to P3 pin 1. The wire from pad 'd' goes to the free wire on the USB card coming from pad 4 (CTS) on the bottom of the board. (See photos 1 & 2. For more, see <http://www.nue-psk.com/usb/using.html>).
- 2) Add 5V jumper on modem board at Field Programming port P4. First cut the 'x' trace connecting the two pads near the lower-left LCD standoff. (Make sure this 3.3V trace is thoroughly cut.) Next add a short jumper from the leftmost 'X' pad down to the pad above the Select pushbutton. This jumper will supply 5V to the USB card. (See photo 3.)
- 3) Use template from website to make holes in existing bottom chassis for USB connectors and LEDs, or use the optionally-available pre-drilled chassis.
- 4) Load the latest software into your modem to enjoy the USB capabilities.
- 5) Plug in the USB card to the Field Programming port P4 along the modem board's left edge and attach the Extra Signal jumper to P3. Using photo 1 as an example, the white wire would go to the innermost pin of P3.)
- 6) Insert two-board assembly to new/modified chassis and screw into place. (Proper clearance for modem board controls can be achieved by biasing board to lower left while tightening top and bottom screws.)

Photo 1:  
"Extra Signals cable"  
(See Assy step 1)

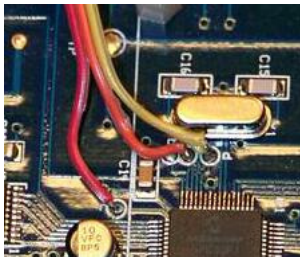


Photo 2:  
"Extra Signals cable"  
(See Assy step 1)



Photo 3:  
Adding 5V to P4  
(See Assy step 2)



### NOTES:

- 1) RTCC parts are not provided on the board.
- 3) Download the latest USB Manual and Command Summary documents at [www.nue-psk.com/usb](http://www.nue-psk.com/usb)
- 4) Contact [support@midnightdesignsolutions.com](mailto:support@midnightdesignsolutions.com) with questions.